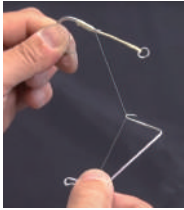


# «How to use SW Finisher»

1



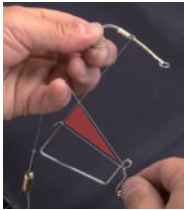
Place ① directly onto the thread.

2



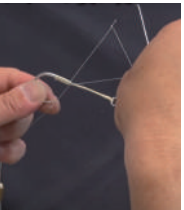
Hang the thread on ②.

3



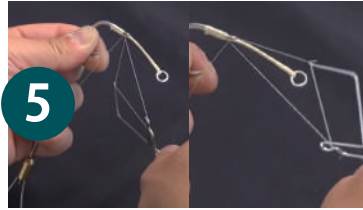
Make a half turn with the finisher from back to front so that a triangle is created.

4



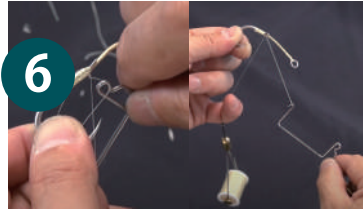
Bring the finisher up and place the edge of the triangle on the root of flat eye.

5



Make a few turns with the finisher around the hook shank, while passing solid ring through the triangle.

6



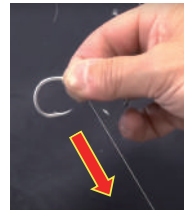
Bring ④ close to flat eye and let the thread slip off it.

7



Grip the thread with left middle finger.

8



Pull the thread and bobbin tightly.

